

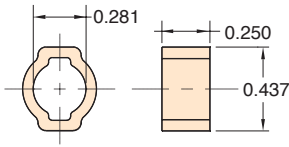


# CLIPPARD CLAMPS

## Quick Set Hose Clamp



**Type:** Zinc plated steel  
**Use:** 5000-1 with twin vinyl hose

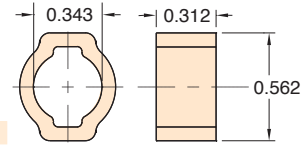


**Part No.** **Description**  
**5000-1** **Hose Clamp**

## Quick Set Hose Clamp

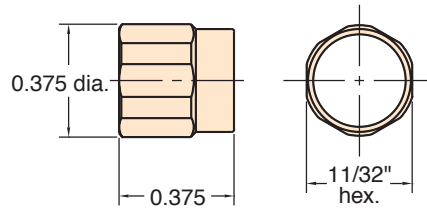


**Type:** Zinc plated steel



**Part No.** **Description**  
**5000-1A** **Hose Clamp**

## Reusable Hose Clamp



**Part No.** **Description**  
**5000-2** **Hose Clamp**

**Material:** Brass, self-threading, reusable

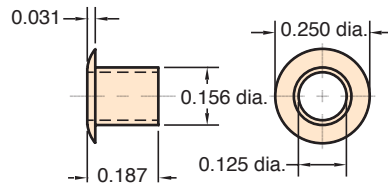
**Use With:** 11765 Buna-N hose [VYH1-0804-CLT](#) vinyl hose and Clippard hose fittings

**Installation:** Slip sleeve over hose, push onto fitting, then screw into place; tighten with wrench

**Options:** (-ENP)



## Press-On Hose Clamp



**Part No.** **Description**  
**5000-4** **Hose Clamp**

**Material:** Brass, press-on hose clamp

**Use:** for [VYH1-0402-CLT](#) hose 1/16" I.D. vinyl

**Installation:** Simply place hose clamp over hose with flange end out; then press hose partially onto fitting, then slide clamp back toward fitting to secure

**Options:** (-ENP)



## Polyethylene vs Vinyl vs Polyurethane

Polyurethane offers a wider range of chemical compatibility than Vinyl, it may be used at much higher temperatures and clamps are not needed when used with barb fittings. Linear low density polyethylene offers a lower cost alternative to polyurethane and superior environmental stress crack resistance over standard polyethylene. Both polyurethane and polyethylene are FDA approved.

## Typical Hose & Tubing Bend Radii

When using hose or tubing, care should always be taken to avoid sharp bends to prevent compressing the inside diameter of the hose or tubing and restricting flow. For extremely close connections, allow a short loop of hose to avoid crimping.

Clippard Hose & Tubing		I.D.	O.D.	Min. Bend Radius
<a href="#">3811-1-RL</a>	Copper Tube	1/16"	1/8"	3/8"
NYT1-XXX	Nylon Tubing	3/32"	1/8"	3/8"
VYH1-XXX	80A Duro. Vinyl Hose	1/16"	1/8"	3/8"
VYH1-XXX	80A Duro. Vinyl Hose	1/8"	1/4"	1/2"
VYH2-XXX	Dual Vinyl Hose	1/8"	1/4"	1/2"
URH1-XXX	85A Duro. Polyurethane Hose	1/16"	1/8"	3/16"
URH8-XXX	Ribbon 85A Duro. Polyurethane	1/16"	1/8"	3/16"
URH1-XXX	85A Duro. Polyurethane Hose	1/8"	1/4"	3/8"
URH2-XXX	Dual 85A Duro. Polyurethane	1/8"	1/4"	3/8"
URH8-0804-XXX	Ribbon 85A Duro. Polyurethane	1/8"	1/4"	3/8"
URT1-0503-XXX	95A Duro. Polyurethane Tubing	3/32"	5/32"	3/8"
URT1-0604M-XXX	95A Duro. Polyurethane Tubing	4 mm	6 mm	1/2"
URT1-0805-XXX	95A Duro. Polyurethane Tubing	0.160"	1/4"	1/2"
<a href="#">URT1-0805M-CLT</a>	95A Duro. Polyurethane Tubing	5 mm	8 mm	3/4"
URT1-1208-XXX	95A Duro. Polyurethane Tubing	0.245"	3/8"	7/8"
URT1-1610-XXX	95A Duro. Polyurethane Tubing	0.320"	1/2"	1 1/8"
PET1-0503-XXX	50D Duro. Polyethylene Tubing	0.106"	5/32"	1/2"
PET1-0604M-XXX	50D Duro. Polyethylene Tubing	4 mm	6 mm	1 1/4"
PET1-0805-XXX	50D Duro. Polyethylene Tubing	0.170"	1/4"	1 1/4"
PET1-1208-XXX	50D Duro. Polyethylene Tubing	1/4"	3/8"	2"